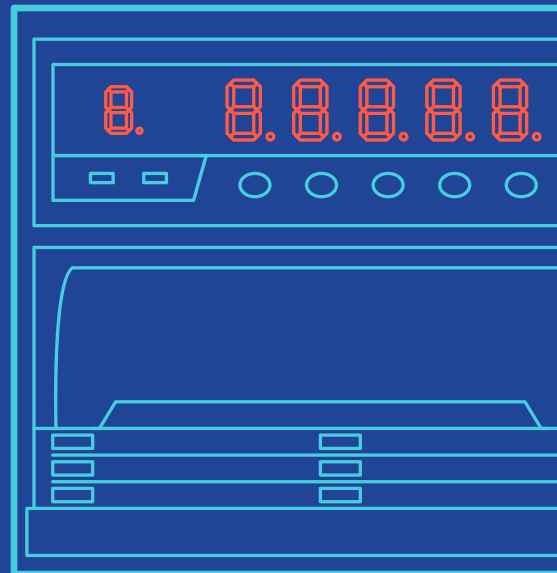
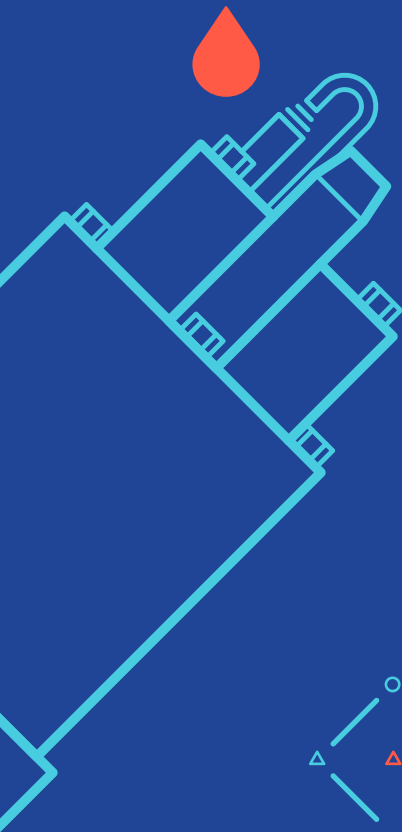
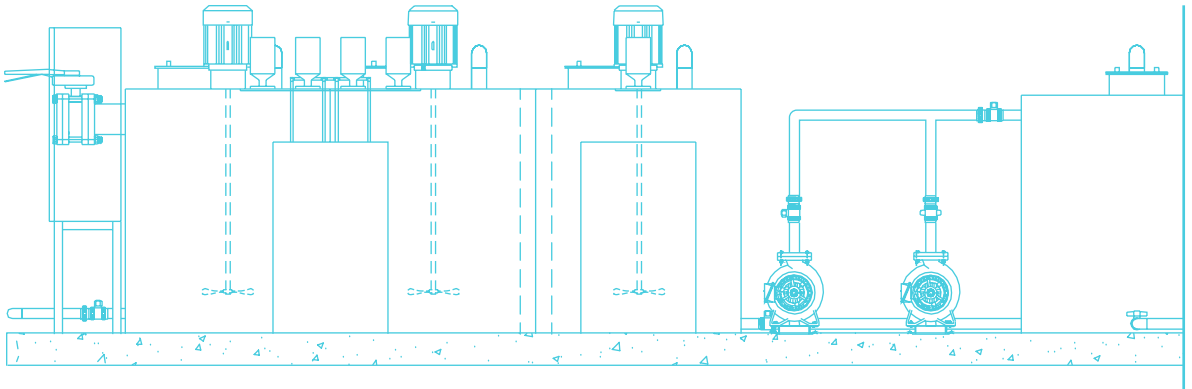




ENVIRONMENT LABORATORY IMPACT

NEUTRALIZATION & CHEMICAL DISINFECTION SYSTEM





GENERAL PROCESS DESCRIPTION OF THE INTEGRATED MEDICAL WASTE WATER TREATMENT SYSTEM

The waste water treatment system is designed mainly for disinfection and neutralisation. This system consists of disinfection, COD and BOD reduction, and NCD (non chemical disinfection). This system is divided into three types of treatment methods in three different compartments in a single tank. Nalco Chemical or equivalent (Novco 3430 & 780), is used along with Sodium Hypochlorite and Caustic Soda. The tanks are constructed on a single concrete footing with one single tank in three compartments. The waste water flow is continuous and flows through each compartment with the required chemical dosage according to the system design.

HAZARDOUS LIQUID MEDICAL WASTE

Medical Waste materials are DANGEROUS/HARMFUL to health and the environment and require special management, treatment and disposal. Medical Liquid waste consist of chemical, toxic, and or corrosive substances with water. Amongst the various source of hospital liquid waste are:



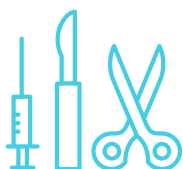
Pathology &
History Laboratory



Mortuary



Clinical Lab
Waste



Surgery &
Emergency

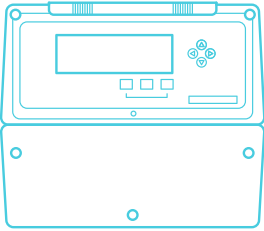


Pharmacy



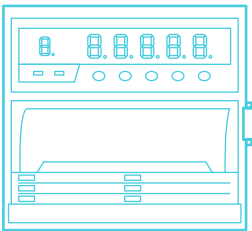
Chemotherapy

ACCESSORIES



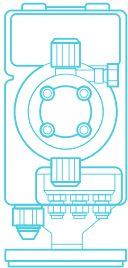
Kontrol 800

Multi-parameters control instruments for industrial and water treatment application. High accuracy measure and friendly menu settings. RS485 port with ModBus RTU protocol for fully compatible remote data logging interface.



Recorder

Dotting style of 6-channel chart recorder with universal input, low-cost, short depth 150mm, light weight 1.5kgs and IP65 water resistance.



Dosing Pump

The innovative Tekna EVO series electronic-metering pumps is a result of our close partnerships with our customers worldwide. These multifunctional metering pumps maintain the high quality and dependability that is synonymous with SEKO quality.



Submersible transfer pump

This dirty water pump is ideal for waste water transfer, flood and sump drainage. Capable of handling solids up to 1.38", the water pump processes 2377 gallons per hour for quick work on challenging jobs.



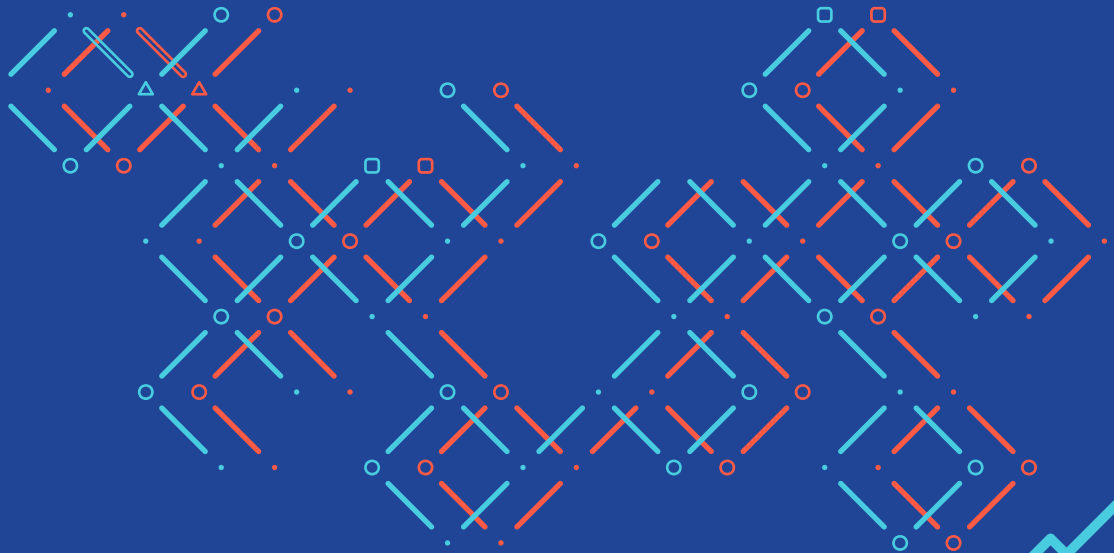
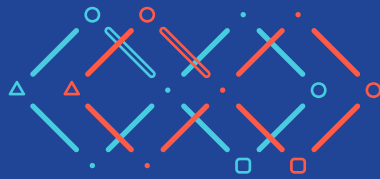
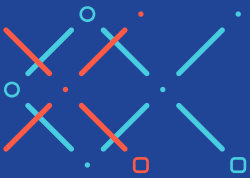
Sodium hypochlorite (NaOCl)

This is a compound that can be effectively used for water purification. It is used on a large scale for surface purification, bleaching, odour removal and water disinfection.

ABOUT ELI

ELI (Environment Laboratory Impact) provides consultation on clinical equipment specifications, site planning, manpower requirements, incident reporting, and comparative studies to institutions dealing with chemical, biological, and radioactive waste. We customise engineering solutions and communications management system to achieve a seamless and cost effective measures to our partners.

ELI aspires to deliver impeccable quality in design, supply, installation, test and commission, and maintenance for medical and science institutions, and has worked closely with diverse partners across a range of industries to deliver astounding results.



Environment Laboratory Impact Services Pte Ltd

Blk 7, Kallang Place,
#02-10 Singapore 339153

T. (65) 6745 0593
(65) 6745 0693
E. info@eli.com.sg

WWW.ELI.COM.SG

